

Digitized by the Internet Archive  
in 2015

<https://archive.org/details/datebookfor195993unse>





대한민국 대통령 리승만 박사

**Dr. Syngman Rhee**

President of the Republic of Korea



1959

Merry Christmas

to

Allie

from

The De Camps.



KOREA

대한민국

JANUARY			FEBRUARY			MARCH		
S	..	4 11 18 25 ..	S	1 8 15 22 .. ..	S	1 8 15 22 29 ..		
M	..	5 12 19 26 ..	M	2 9 16 23 .. ..	M	2 9 16 23 30 ..		
Tu	..	6 13 20 27 ..	Tu	3 10 17 24 .. ..	Tu	3 10 17 24 31 ..		
W	..	7 14 21 28 ..	W	4 11 18 25 .. ..	W	4 11 18 25 .. ..		
Th	1	8 15 22 29 ..	Th	5 12 19 26 .. ..	Th	5 12 19 26 .. ..		
F	2	9 16 23 30 ..	F	6 13 20 27 .. ..	F	6 13 20 27 .. ..		
Sa	3	10 17 24 31 ..	Sa	7 14 21 28 .. ..	Sa	7 14 21 28 .. ..		
APRIL			MAY			JUNE		
S	..	5 12 19 26 ..	S	..	3 10 17 24 31	S	..	7 14 21 28 ..
M	..	6 13 20 27 ..	M	..	4 11 18 25 ..	M	1	8 15 22 29 ..
Tu	..	7 14 21 28 ..	Tu	..	5 12 19 26 ..	Tu	2	9 16 23 30 ..
W	1	8 15 22 29 ..	W	..	6 13 20 27 ..	W	3	10 17 24 .. ..
Th	2	9 16 23 30 ..	Th	..	7 14 21 28 ..	Th	4	11 18 25 .. ..
F	3	10 17 24 .. ..	F	1	8 15 22 29 ..	F	5	12 19 26 .. ..
Sa	4	11 18 25 .. ..	Sa	2	9 16 23 30 ..	Sa	6	13 20 27 .. ..
JULY			AUGUST			SEPTEMBER		
S	..	5 12 19 26 ..	S	..	2 9 16 23 30	S	..	6 13 20 27 ..
M	..	6 13 20 27 ..	M	..	3 10 17 24 31	M	..	7 14 21 28 ..
Tu	..	7 14 21 28 ..	Tu	..	4 11 18 25 ..	Tu	1	8 15 22 29 ..
W	1	8 15 22 29 ..	W	..	5 12 19 26 ..	W	2	9 16 23 30 ..
Th	2	9 16 23 30 ..	Th	..	6 13 20 27 ..	Th	3	10 17 24 .. ..
F	3	10 17 24 31 ..	F	..	7 14 21 28 ..	F	4	11 18 25 .. ..
Sa	4	11 18 25 .. ..	Sa	1	8 15 22 29 ..	Sa	5	12 19 26 .. ..
OCTOBER			NOVEMBER			DECEMBER		
S	..	4 11 18 25 ..	S	1 8 15 22 29 ..	S	..	6 13 20 27 ..	
M	..	5 12 19 26 ..	M	2 9 16 23 30 ..	M	..	7 14 21 28 ..	
Tu	..	6 13 20 27 ..	Tu	3 10 17 24 .. ..	Tu	1	8 15 22 29 ..	
W	..	7 14 21 28 ..	W	4 11 18 25 .. ..	W	2	9 16 23 30 ..	
Th	1	8 15 22 29 ..	Th	5 12 19 26 .. ..	Th	3	10 17 24 31 ..	
F	2	9 16 23 30 ..	F	6 13 20 27 .. ..	F	4	11 18 25 .. ..	
Sa	3	10 17 24 31 ..	Sa	7 14 21 28 .. ..	Sa	5	12 19 26 .. ..	









정월의 아가씨들

Pounding rice into flour which is used to make rice-cakes for special holiday occasions.



JANUARY

1	THURSDAY 설날 New Year's Day
2	FRIDAY
3	SATURDAY

북한산 시봉  
The peak of Bookhan Mountain

JANUARY

4	SUNDAY
5	MONDAY
6	TUESDAY
7	WEDNESDAY
8	THURSDAY
9	FRIDAY
10	SATURDAY







# JANUARY

11

SUNDAY

12

MONDAY

13

TUESDAY

14

WEDNESDAY

15

THURSDAY

16

FRIDAY

17

SATURDAY

남산으로 가는길

Snowy trail to the peak of Mount Nam-san

JANUARY

18	SUNDAY
19	MONDAY
20	TUESDAY
21	WEDNESDAY
22	THURSDAY
23	FRIDAY
24	SATURDAY

방화수류정 (수원)  
An ancient pavilion in Soowon City  
(Bangwha Sooryoo Jung)





# JANUARY

25	SUNDAY
26	MONDAY
27	TUESDAY
28	WEDNESDAY
29	THURSDAY
30	FRIDAY
31	SATURDAY

연날리기  
Kite flying

FEBRUARY

1	SUNDAY
2	MONDAY
3	TUESDAY
4	WEDNESDAY
5	THURSDAY
6	FRIDAY
7	SATURDAY

파고다공원의 야경

Night view of the thirteen story stone pagoda standing in the grounds of Pagoda Park in Seoul. This pagoda is believed to have been built in 1466.







FEBRUARY

8	SUNDAY
9	MONDAY
10	TUESDAY
11	WEDNESDAY
12	THURSDAY
13	FRIDAY
14	SATURDAY

눈에 쌓인 서울근교

Highway traffic overcomes winter difficulties  
in the vicinity of Seoul

FEBRUARY

15	SUNDAY
16	MONDAY
17	TUESDAY
18	WEDNESDAY
19	THURSDAY
20	FRIDAY
21	SATURDAY

향원정과 여인(경복궁)  
An ancient lagoon in Gyungbok Palace  
grounds in Seoul





# FEBRUARY

22	SUNDAY
23	MONDAY
24	TUESDAY
25	WEDNESDAY
26	THURSDAY
27	FRIDAY
28	SATURDAY

한국의 집  
Korea House in Seoul, where various  
entertainment programs are offered to  
the foreign guests

MARCH

1	SUNDAY 三一절 Samil Independence Movement Day
2	MONDAY
3	TUESDAY
4	WEDNESDAY
5	THURSDAY
6	FRIDAY
7	SATURDAY







MARCH

8	SUNDAY
9	MONDAY
10	TUESDAY
11	WEDNESDAY
12	THURSDAY
13	FRIDAY
14	SATURDAY

나뉘기  
Girls on the "Jumping Window"

MARCH

15	SUNDAY
16	MONDAY
17	TUESDAY
18	WEDNESDAY
19	THURSDAY
20	FRIDAY
21	SATURDAY

구 파밭(서울교외)  
Blossoming cherry trees in  
a Seoul public park.





MARCH

22	SUNDAY
23	MONDAY
24	TUESDAY
25	WEDNESDAY
26	THURSDAY 리대통령 탄신일 President Rhee's Birthday
27	FRIDAY
28	SATURDAY

선단사의 어순(기율)  
Buddhist monks at their departure of  
Sunomso Temple

MARCH — APRIL

29

SUNDAY

30

MONDAY

31

TUESDAY

1

WEDNESDAY

2

THURSDAY

3

FRIDAY

4

SATURDAY

농촌풍경

"Jige" is still common in the rural community as a tool to carry things.







APRIL

5

SUNDAY  
식목일 Arbor Day

6

MONDAY

7

TUESDAY

8

WEDNESDAY

9

THURSDAY

10

FRIDAY

11

SATURDAY

상경원의 봄

View inside Changgyeong Palace grounds, Seoul

APRIL

12	SUNDAY
13	MONDAY
14	TUESDAY
15	WEDNESDAY
16	THURSDAY
17	FRIDAY
18	SATURDAY

서울주변의 성지

Ancient city walls cap the mountains  
encompassing the city of Seoul





APRIL

19	SUNDAY
20	MONDAY
21	TUESDAY
22	WEDNESDAY
23	THURSDAY
24	FRIDAY
25	SATURDAY

삼가산에서본 수이봉  
View from Mount Samgak summit.

APRIL — MAY

26	SUNDAY
27	MONDAY
28	TUESDAY
29	WEDNESDAY
30	THURSDAY
1	FRIDAY
2	SATURDAY

창덕궁 어수문  
Usso-moon, or Fish Water Gate,  
in Changduk Palace, Seoul.







MAY

3

SUNDAY

4

MONDAY

5

TUESDAY

6

WEDNESDAY

7

THURSDAY

8

FRIDAY

9

SATURDAY

순천의 우교 (전남)

'Rainbow Bridge' in Soonchun, South Julla Province

MAY

10	SUNDAY
11	MONDAY
12	TUESDAY
13	WEDNESDAY
14	THURSDAY
15	FRIDAY
16	SATURDAY

성환목장

Dairy farming near Seoul





MAY

17	SUNDAY
18	MONDAY
19	TUESDAY
20	WEDNESDAY
21	THURSDAY
22	FRIDAY
23	SATURDAY

1911

Washing clothes in a fast-flowing stream

MAY

24	SUNDAY
25	MONDAY
26	TUESDAY
27	WEDNESDAY
28	THURSDAY
29	FRIDAY
30	SATURDAY

이름의 설악산  
Sulak-san valley in summer







MAY — JUNE

31	SUNDAY
1	MONDAY
2	TUESDAY
3	WEDNESDAY
4	THURSDAY
5	FRIDAY
6	SATURDAY 의종일 Memorial Day

서울의 야경

A night view of the capital city  
Seoul, across the Han River

JUNE

7	SUNDAY
8	MONDAY
9	TUESDAY
10	WEDNESDAY
11	THURSDAY
12	FRIDAY
13	SATURDAY

석조전(덕수궁)

Museum in the grounds of Duksoo  
Palace, Seoul





JUNE

14

SUNDAY

15

MONDAY

16

TUESDAY

17

WEDNESDAY

18

THURSDAY

19

FRIDAY

20

SATURDAY

수리사 (수리굴재)

An aerial view of Guamsin-ni Temple  
located near Mount Meak North Julla  
Province.

JUNE

21	SUNDAY
22	MONDAY
23	TUESDAY
24	WEDNESDAY
25	THURSDAY 六·二五의 날 Korean War Anniversary
26	FRIDAY
27	SATURDAY

학  
White cranes are common  
throughout Korea







JUNE — JULY

28

SUNDAY

29

MONDAY

30

TUESDAY

1

WEDNESDAY

2

THURSDAY

3

FRIDAY

4

SATURDAY

평릉

A beautiful driveway to Gwang Neung picnic area

JULY

5	SUNDAY
6	MONDAY
7	TUESDAY
8	WEDNESDAY
9	THURSDAY
10	FRIDAY
11	SATURDAY

경주계능

Gye Neung, an ancient Royal Tomb more than one thousand years old





JULY

12	SUNDAY
13	MONDAY
14	TUESDAY
15	WEDNESDAY
16	THURSDAY
17	FRIDAY 제헌절 Constitution Day
18	SATURDAY

다양사경의하나 도담삼봉(충북)  
Geumgang River valley in North  
Choongchung Province

JULY

19

SUNDAY

20

MONDAY

21

TUESDAY

22

WEDNESDAY

23

THURSDAY

24

FRIDAY

25

SATURDAY

단양거경의하나 사진암  
Rocky cliffs in North Choongchung  
Province







JULY — AUGUST

26

SUNDAY

27

MONDAY

28

TUESDAY

29

WEDNESDAY

30

THURSDAY

31

FRIDAY

1

SATURDAY

불당

Buddhist worshippers at prayer

# AUGUST

2	SUNDAY
3	MONDAY
4	TUESDAY
5	WEDNESDAY
6	THURSDAY
7	FRIDAY
8	SATURDAY

덕수궁 작약

Peony blossoms in the Duksoo  
Palace gardens, Seoul





AUGUST

9

SUNDAY

10

MONDAY

11

TUESDAY

12

WEDNESDAY

13

THURSDAY

14

FRIDAY

15

SATURDAY

광복절 Liberation Day

하선포의 호반 (강원도)

A summer resort area in Gangwon Province

AUGUST

16	SUNDAY
17	MONDAY
18	TUESDAY
19	WEDNESDAY
20	THURSDAY
21	FRIDAY
22	SATURDAY

천지연 폭포(제주도)  
A water-fall in Jeju Island







AUGUST

23

SUNDAY

24

MONDAY

25

TUESDAY

26

WEDNESDAY

27

THURSDAY

28

FRIDAY

29

SATURDAY

과천포의 풍경 (강원도)

A lake side view in Gangwon Province

AUGUST — SEPTEMBER

30	SUNDAY
31	MONDAY
1	TUESDAY
2	WEDNESDAY
3	THURSDAY
4	FRIDAY
5	SATURDAY





SEPTEMBER

6	SUNDAY
7	MONDAY
8	TUESDAY
9	WEDNESDAY
10	THURSDAY
11	FRIDAY
12	SATURDAY

八角亭(조선호텔 내)

Octagonal Pavilion in the Josun Hotel gardens in Seoul

SEPTEMBER

13	SUNDAY
14	MONDAY
15	TUESDAY
16	WEDNESDAY
17	THURSDAY 추석 Autumn Harvest Festival
18	FRIDAY
19	SATURDAY

백영도 (황해도옹진)

Imposing rock formations in Ongjin district, Hwanghae Province







SEPTEMBER

20

SUNDAY

21

MONDAY

22

TUESDAY

23

WEDNESDAY

24

THURSDAY

25

FRIDAY

26

SATURDAY

빙대망리끼

A big catch of pollack dry in the sun.

-SEPTEMBER — OCTOBER

27	SUNDAY
28	MONDAY
29	TUESDAY
30	WEDNESDAY
1	THURSDAY
2	FRIDAY
3	SATURDAY 개천절 National Foundation Day

경복궁의 일부  
View inside Gyungbok Palace grounds, Seoul





# OCTOBER

4	SUNDAY
5	MONDAY
6	TUESDAY
7	WEDNESDAY
8	THURSDAY
9	FRIDAY 한글날 Hangeul Day (Korean Alphabet Day)
10	SATURDAY

비워둡니다

Autumn leaves bloom in the Secret  
Garden at Changdeok Palace, Seoul!

OCTOBER

11	SUNDAY
12	MONDAY
13	TUESDAY
14	WEDNESDAY
15	THURSDAY
16	FRIDAY
17	SATURDAY

포도와 여인  
A partial view of grape vineyard in  
the vicinity of Anyang City, Gyunggi  
Province







OCTOBER

18	SUNDAY
19	MONDAY
20	TUESDAY
21	WEDNESDAY
22	THURSDAY
23	FRIDAY
24	SATURDAY 유엔 데이 UN Day

갈대  
Bush clover

OCTOBER

25	SUNDAY
26	MONDAY
27	TUESDAY
28	WEDNESDAY
29	THURSDAY
30	FRIDAY
31	SATURDAY

화천수력발전소(강원도)  
Hwachun hydro-electric power plant,  
Gangwon Province





# NOVEMBER

1	SUNDAY
2	MONDAY
3	TUESDAY
4	WEDNESDAY
5	THURSDAY
6	FRIDAY
7	SATURDAY

54

Climbers cross a waterfall on the slopes of Mount Sulak

# NOVEMBER

8	SUNDAY
9	MONDAY
10	TUESDAY
11	WEDNESDAY
12	THURSDAY
13	FRIDAY
14	SATURDAY

토황성 폭포

Waterfalls in the Sulak-san valley







NOVEMBER

15

SUNDAY

16

MONDAY

17

TUESDAY

18

WEDNESDAY

19

THURSDAY

20

FRIDAY

21

SATURDAY

일대사

Pyeongdeok stone pagoda in Booyu,  
South Choongchung Province

NOVEMBER

22	SUNDAY
23	MONDAY
24	TUESDAY
25	WEDNESDAY
26	THURSDAY
27	FRIDAY
28	SATURDAY

향원정의 겨울

Snow covered Hyangwon Pavilion in  
Gyungbok Palace grounds, Seou





NOVEMBER — DECEMBER

29	SUNDAY
30	MONDAY
1	TUESDAY
2	WEDNESDAY
3	THURSDAY
4	FRIDAY
5	SATURDAY

5114

A bird's eye view of mountains from the top  
of Mount Seduk, Gangwon Province

DECEMBER

6	SUNDAY
7	MONDAY
8	TUESDAY
9	WEDNESDAY
10	THURSDAY
11	FRIDAY
12	SATURDAY

옛성(수원)

Remains of an ancient fortress in Soowon City







DECEMBER

13	SUNDAY
14	MONDAY
15	TUESDAY
16	WEDNESDAY
17	THURSDAY
18	FRIDAY
19	SATURDAY

인왕산

Mount Inwang, Gyeonggi Province

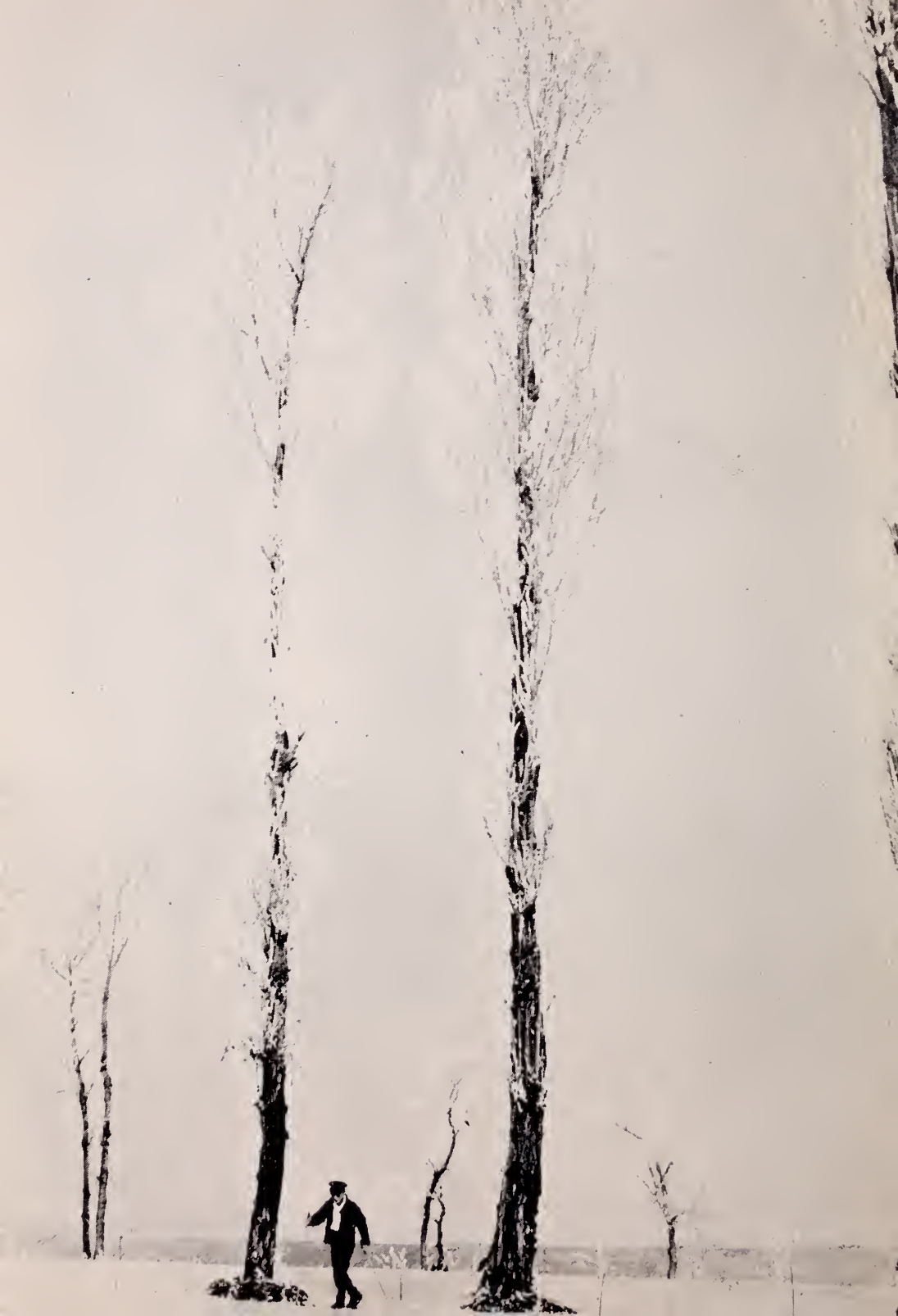
DECEMBER

20	SUNDAY
21	MONDAY
22	TUESDAY
23	WEDNESDAY
24	THURSDAY
25	FRIDAY 성탄절 Christmas
26	SATURDAY

연무대(수원)

Snowy field outside the walls of Soowon City





DECEMBER

27	SUNDAY
28	MONDAY
29	TUESDAY
30	WEDNESDAY
31	THURSDAY

작품

Ice-encrusted poplars at Doaksam, Seoul

*Phone*

*Name and Address*











**The Korea Information Service, Inc.**  
31, First Street, Taepyung-no,  
Seoul, Korea

